

FORTINET

快速入門指南

FortiAP 231KD

FAP-231KD

無線基地台(網路設備)





要 點

保護您的網路

在 <https://support.fortinet.com> 註冊以取得最新的威脅防護更新

預設登入

 <https://192.168.1.2>
Username: **admin**
Password: **leave blank**

 <https://fortiedge.forticloud.com>
Username: **user-defined**
Password: **user-defined**

Fortinet 文件庫

如需入門文件管理指南、最新硬體手冊和參考資源，請造訪
<https://docs.fortinet.com/>

FortiEdge Cloud

體驗簡化的雲端配置、零接觸部署、配置管理和報告，網址為
<https://fortiedge.forticloud.com>

線上快速指南

掃描二維碼查看最新版快速指南。



包裝內容

FortiAP 231KD
FAP-231KD



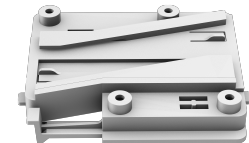
QuickStart Guide



FortiAP Device



8x Mounting Screws
with 8x Anchors

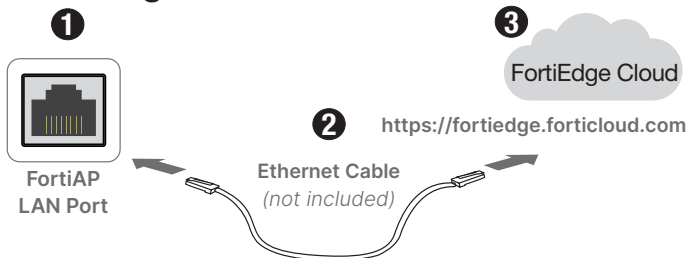


1x Mounting Bracket

設定選項

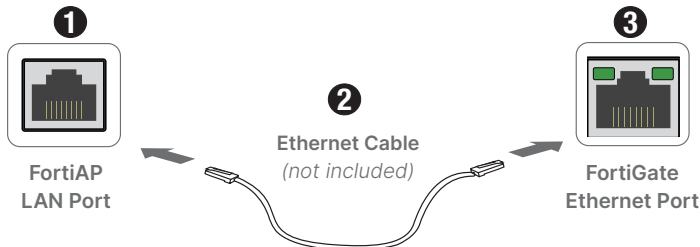
使用 PoE 供電器、FortiGate 或 FortiSwitch PoE 連接埠或選用（不包含）電源轉接器為 FortiAP 設備供電。

FortiEdge Cloud



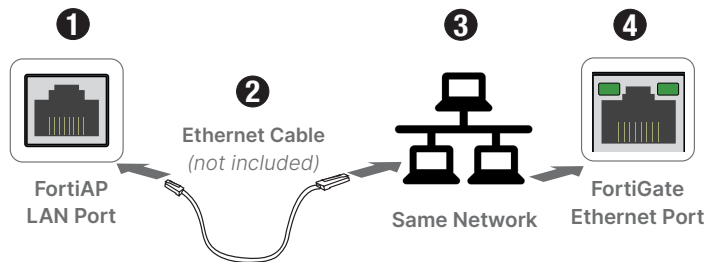
備註：使用您的 FortiCloud 憑證登錄，然後按一下 "Inventory" "Import AP Key" 並輸入裝置貼圖上的雲端金鑰

Direct Connection



備註：要進行自我配置，請在 FortiGate 上預授權 FortiAP，否則一旦連接，請等待 FortiAP 出現在 FortiOS 中的託管 FortiAP 頁面上。

Network Connection

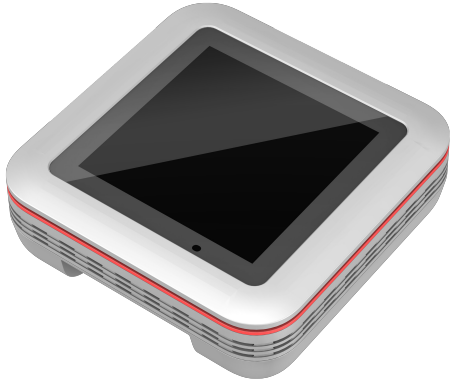


備註：使用 192.168.1.2 以用戶名 admin 連接到 FortiAP 並設置密碼。使用以下命令指定 FortiGate IP：

```
cfg -a AC_IPADDR=0.0.0.0
cfg -c
```

其中 0.0.0.0 是 FortiGate IP。

Top



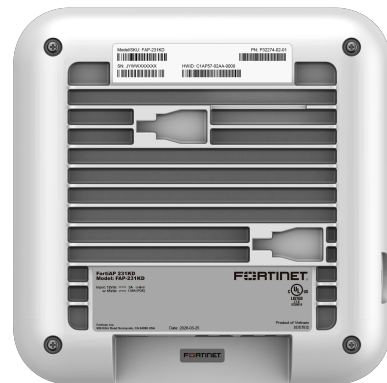
Front View



Bottom



Rear View



CMF 和尺寸

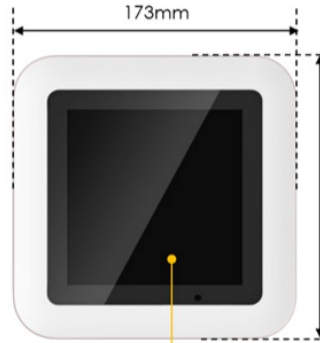
Light-pipe
 - PC
 - Transparent
 - MT11015



Front cover
 - PC+ABS
 - White (RAL 9016Traffic W#F6F6F6)
 - Polish (NAK80, polish 12000)
 - Inside structure matte



Rear cover
 - Aluminum
 - White (RAL 9016Traffic W#F6F6F6)
 - Powder coating MT11015



LCD Lens
 - PC+PMMA
 - Transparent
 - Glossy/ Back printed black frame



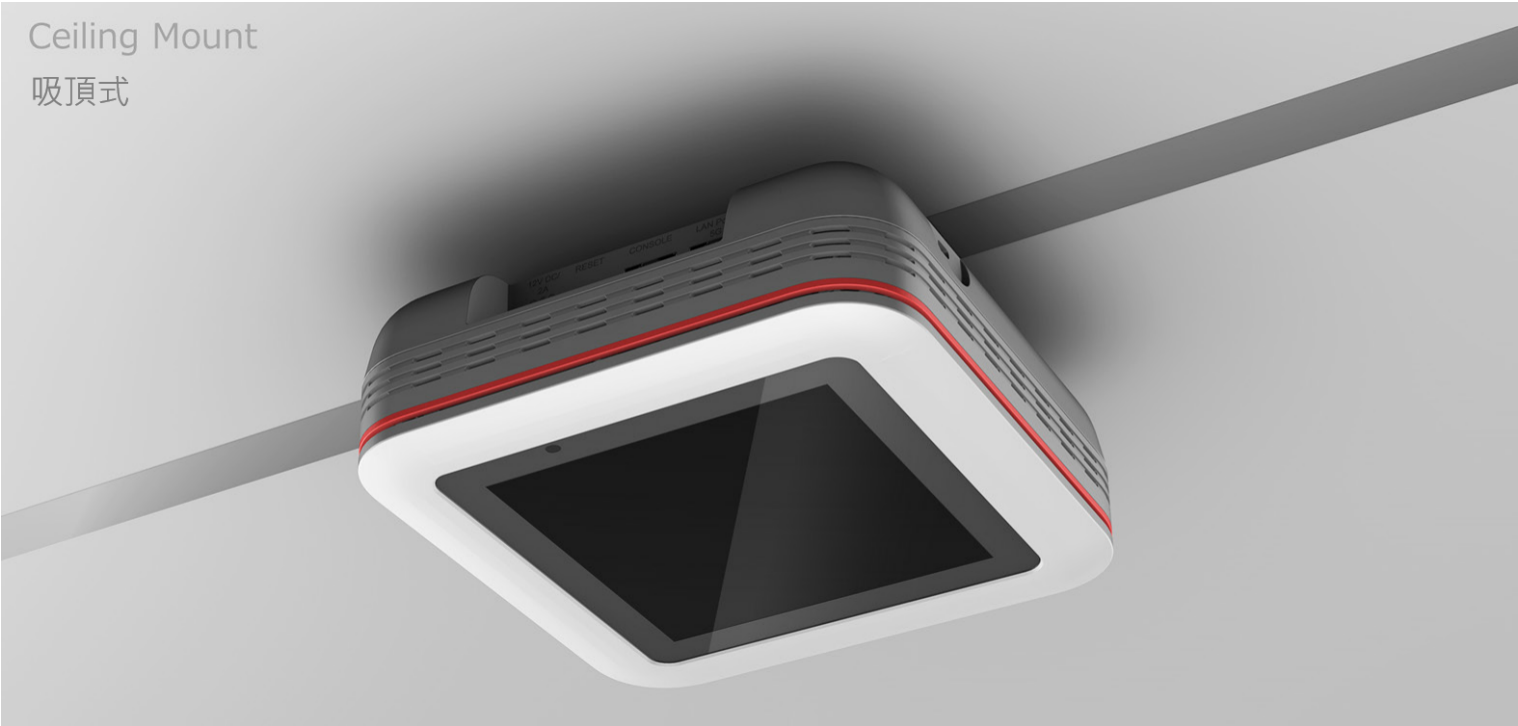
Red frame
 - PC+ABS
 - Pantone 485C
 - Glossy

Middle frame cover
 - PC+ABS
 - White (RAL 9016Traffic W#F6F6F6)
 - MT11015



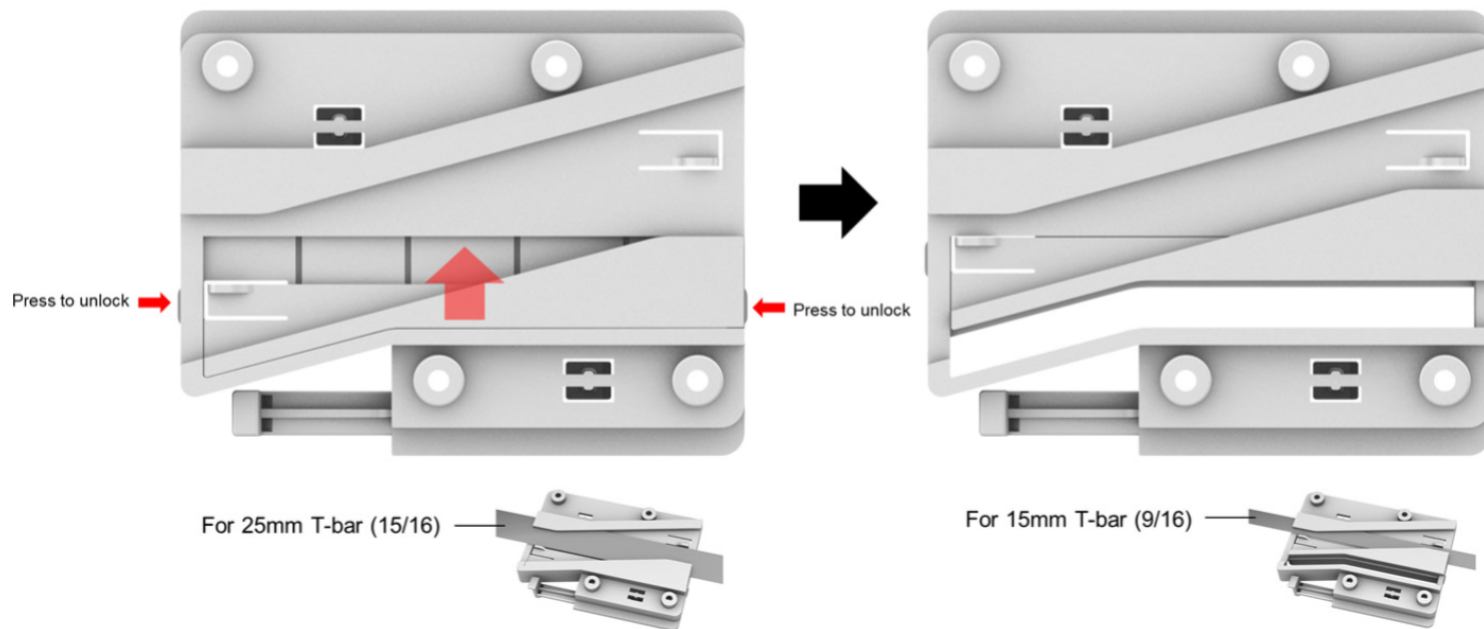
Lettering and icon
 - Laser etching
 - Pantone Cool Gray 5C

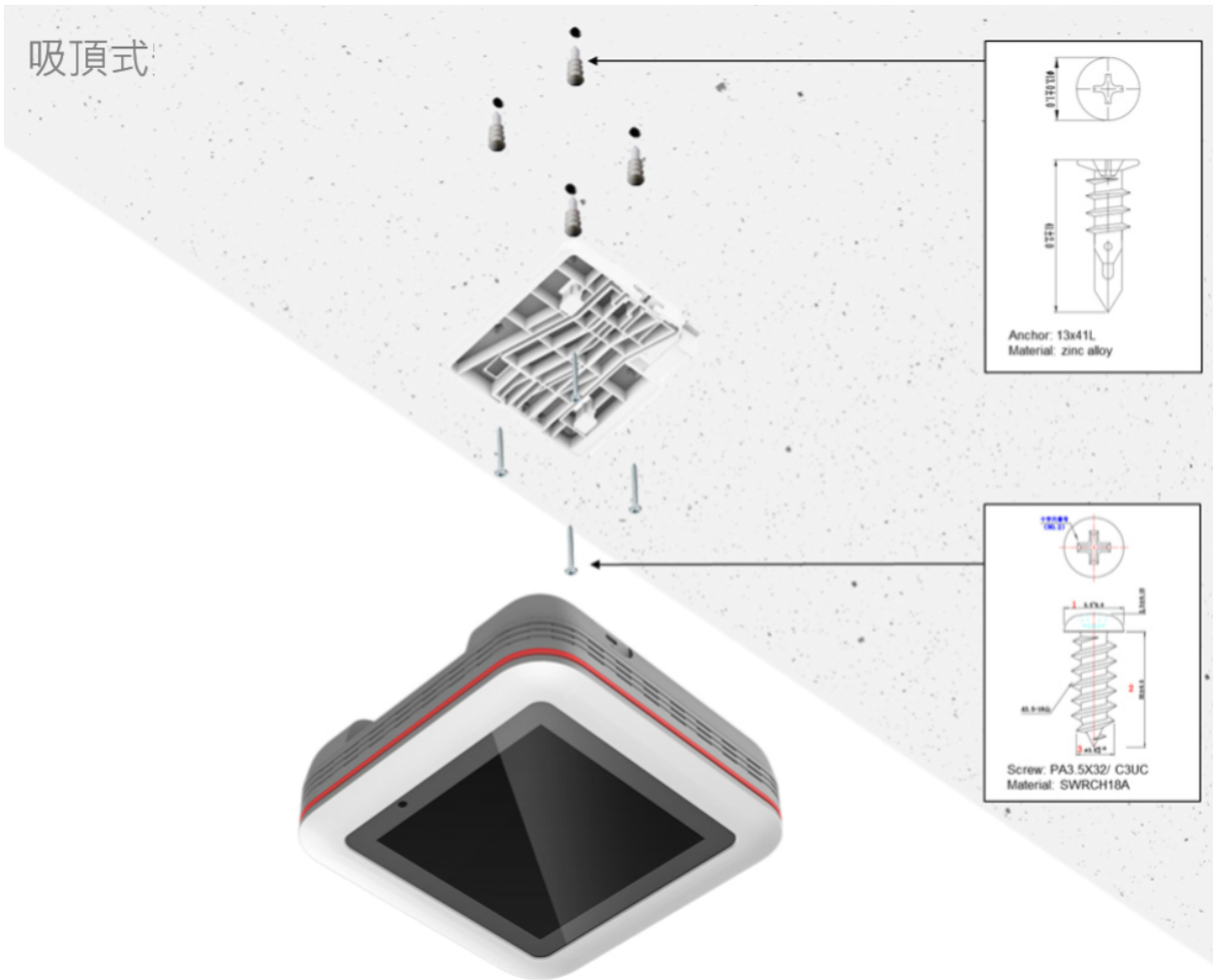
Ceiling Mount
吸頂式



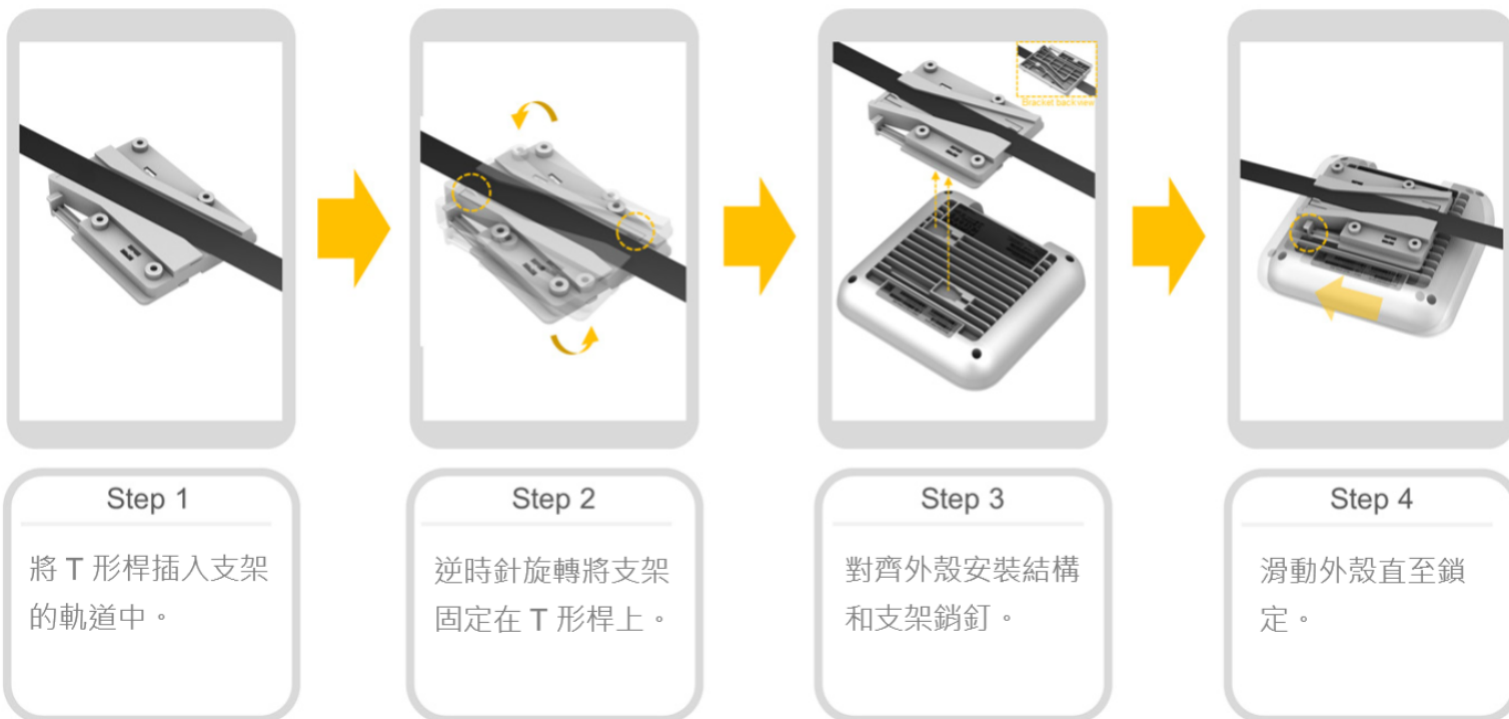
支 架

根據 T 型桿的寬度，按下側面的按鈕並調整滑桿位置，以適應所需的 T 型桿寬度。





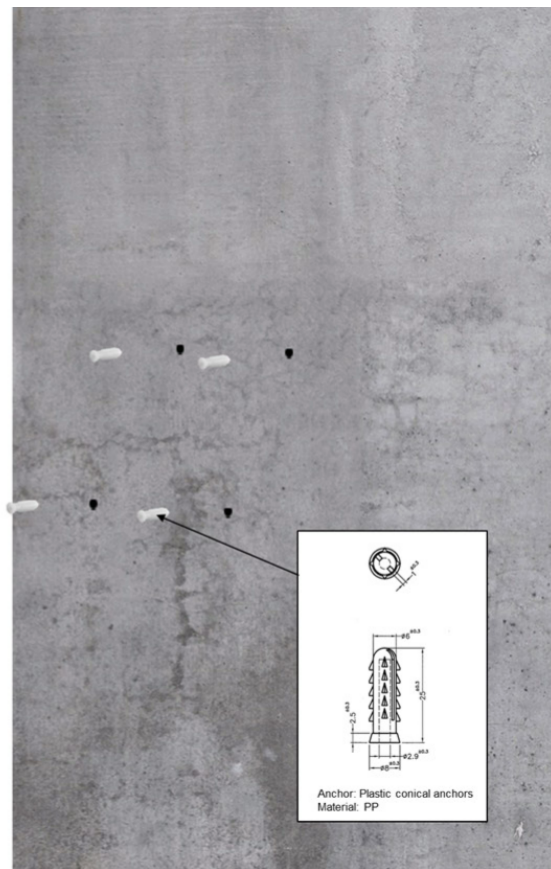
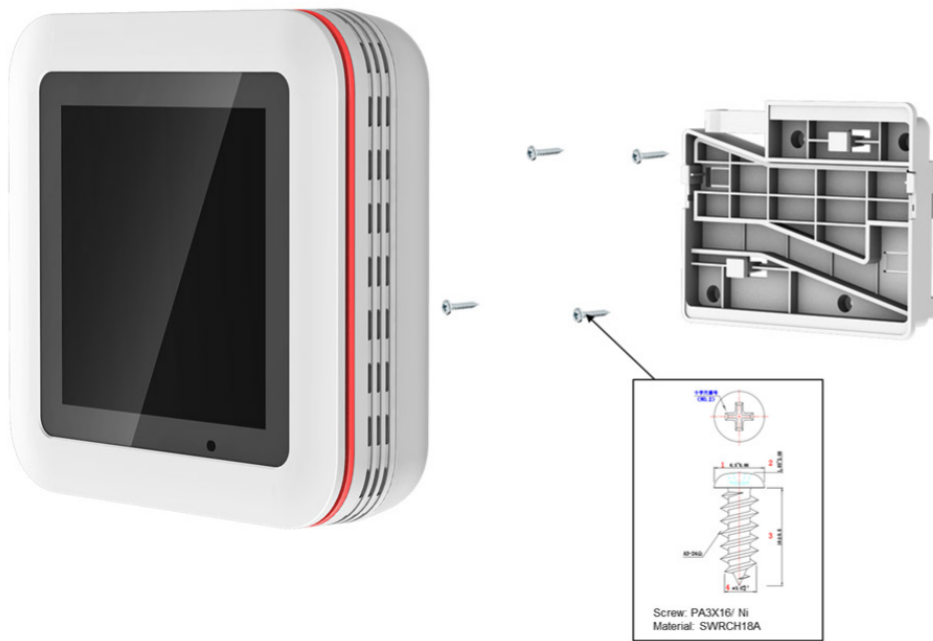
吸頂式安裝



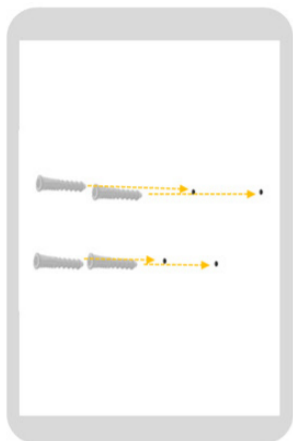
Wall Mount
壁掛式



壁掛式

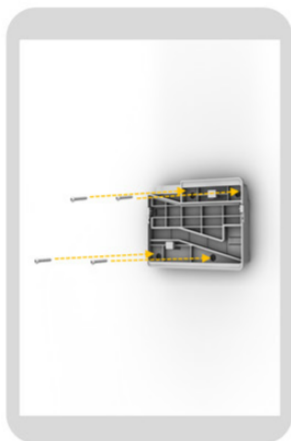


壁掛式安裝



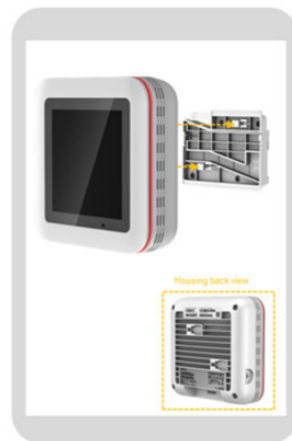
Step 1

鑽孔並將錨釘錘入孔中。



Step 2

用螺絲固定安裝支架。



Step 3

對齊外殼安裝結構和支架銷釘。



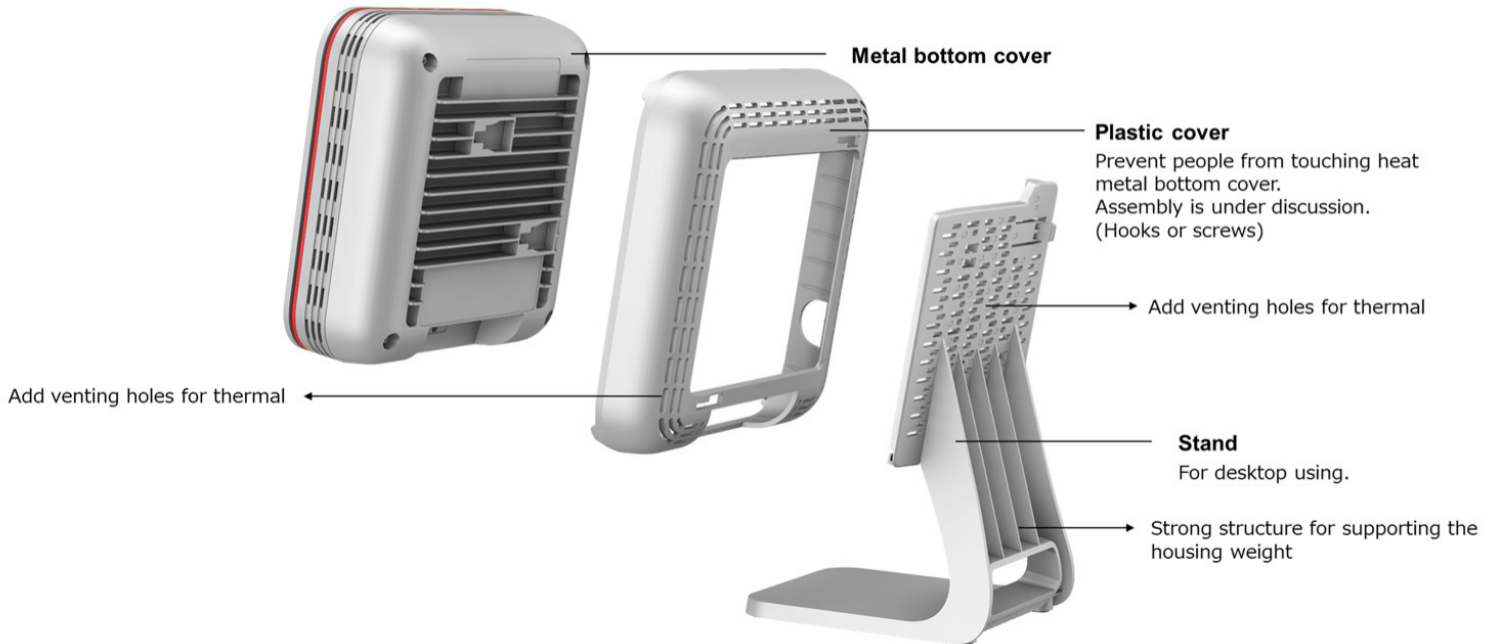
Step 4

滑動外殼直至鎖定。

桌面版前後視圖

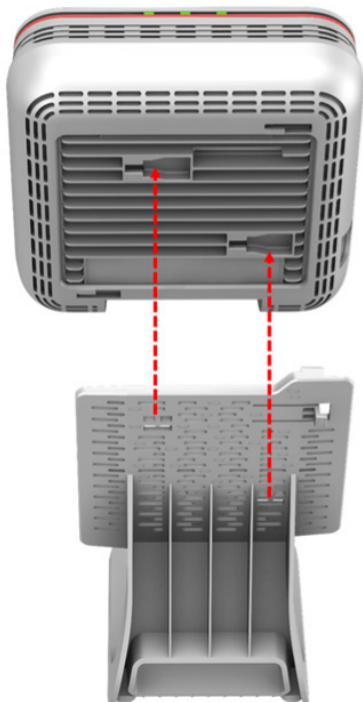


支架和塑膠蓋

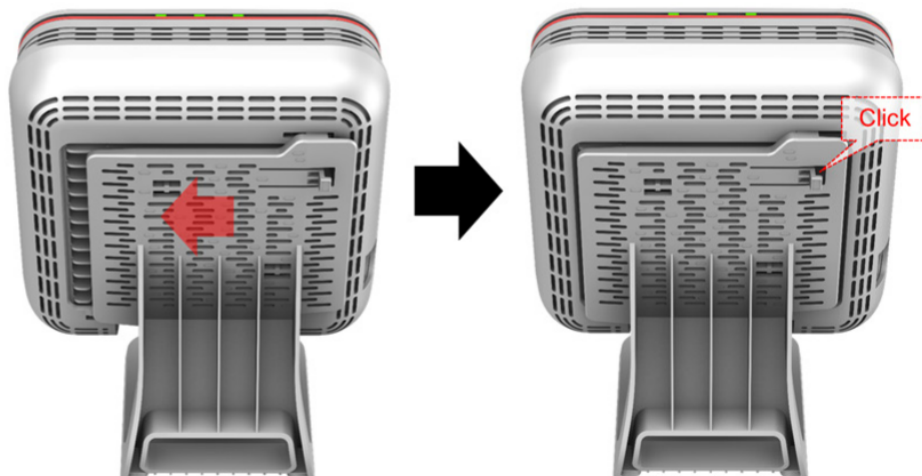


支架組裝

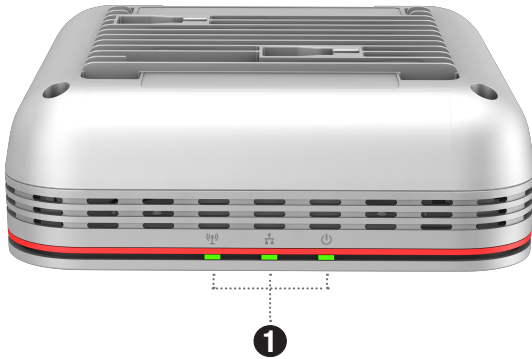
Step.1 Align pins onto holes



Step.2 Slide stand left until locked






FAP-231KD 介面






1 LED STATUS




Wi-Fi

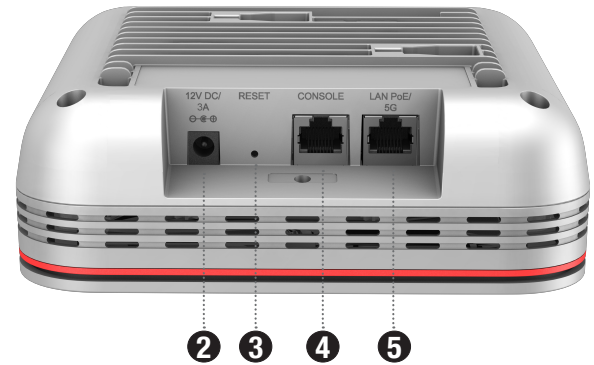
-  **Off:** WiFi not broadcasting
-  **Green:** SSID broadcasting
-  **Blinking Green:** Wireless data activity

LAN/POE

-  **Off:** LAN is not connected
-  **Green:** LAN is connected
-  **Blinking Green:** LAN data activity

Power

-  **Off:** Device is off
-  **Green:** Device is on; connected to a controller
-  **Amber:** Device is on; not connected to a controller



- 2** **OPTIONAL POWER (12V DC)** Optional 12V DC 3A adapter SP-FAP200-PA-XX
- 3** **RESET** system reset
- 4** **CONSOLE (RJ-45)** CLI management
- 5** **LAN POE/ 5G (RJ-45)** 5 Gbps Ethernet interface



- 6** **Kensington Lock**

Cautions and Warnings

Environmental specifications

Ambient operating temperature: 0°C to 50°C
 FR: Température ambiante de fonctionnement: 0°C to 50°C
 IT: Temperatura ambiente di esercizio: 0°C to 50°C
 ES: Temperatura ambiente de funcionamiento

Refer to specific Product Model Data Sheet for Environmental Specifications (Operating Temperature, Storage Temperature, Humidity, and Altitude)

FR: Référez à la Fiche Technique de ce produit pour les caractéristiques environnementales (Température de fonctionnement, température de stockage, humidité et l'altitude).

IT: Fare riferimento alla scheda tecnica specifica del modello di prodotto per le specifiche ambientali (temperatura operativa, temperatura di stoccaggio, umidità e altitudine).

ES: Consulte la hoja de datos específica del modelo de producto para conocer las especificaciones ambientales (temperatura de funcionamiento, temperatura de almacenamiento, humedad y altitud).

Safety

Caution: This equipment is to be used in a Network Environment 0 per IEC TR 62102. This product is connected only to PoE networks without routing to the outside plant.

FR: Attention: Ce matériel doit être utilisé dans un Environnement Réseau 0 par IEC TR 62102. Ce produit est uniquement connecté aux réseaux PoE sans installation externe de routage.

IT: Attenzione: Questa apparecchiatura deve essere utilizzata in un ambiente di rete di tipo 0, secondo la norma IEC TR 62102. Questo prodotto deve essere collegato esclusivamente a reti PoE non instradate verso l'impianto esterno.

ES: Precaución: Este equipo debe utilizarse en un entorno de red 0, según la norma IEC TR 62102. Este producto se conecta únicamente a redes PoE que no tienen enrutamiento hacia la planta exterior.

This product is intended to be supplied by a Listed Direct Plug-In Power Unit marked LPS or Class 2 and rated 12 Vdc, 3 A or by 55 Vdc from PoE source.

FR: Le produit doit être alimenté par un bloc d'alimentation à courant continu homologué UL de 12 Vdc, 3 A nominal marqué LPS ou Classe 2 ou par une source d'alimentation par Ethernet de 55 Vdc (PoE).

IT: Questo prodotto è destinato a essere alimentato da un alimentatore a innesto diretto certificato, contrassegnato come LPS o Classe 2 e con valori nominali di 12 Vdc, 3 A, oppure da 55 Vdc tramite una sorgente PoE.

ES: Este producto está diseñado para ser alimentado por una unidad de alimentación de conexión directa listada, marcada como LPS o Clase 2 y con una clasificación de 12 Vcc, 3 A, o por 55 Vcc provenientes de una fuente PoE.

Suitable for use in environmental air space in accordance with Section 300-22(C) of the National Electrical Code, and Sections 2-128, 12-010(3) and 12-100 of the Canadian Electrical Code, Part 1, CSA C22.1.

FR: Convient pour une utilisation dans l'espace aérien conformément à l'article 300-22 (C) du Code national de l'électricité, et des articles 2-128, 12-010 (3) et 12-100 du Code de l'électricité canadien, Partie 1, CSA C22.1.

IT: Idoneo all'uso negli spazi aerei ambientali in conformità con la Sezione 300-22(C) del National Electrical Code, e con le Sezioni 2-128, 12-010(3) e 12-100 del Canadian Electrical Code, Parte 1, CSA C22.1.

ES: Adecuado para su uso en espacios de aire ambiental, de conformidad con la Sección 300-22(C) del Código Eléctrico Nacional, y las Secciones 2-128, 12-010(3) y 12-100 del Código Eléctrico Canadiense, Parte 1, CSA C22.1.

Regulatory Notices

Federal Communication Commission (FCC) – USA

This device complies with Part 15 of the FCC Rules. Operation is subject to the following two conditions:

- (1) This device may not cause harmful interference, and
- (2) This device must accept any interference received; including interference that may cause undesired operation.

This equipment has been tested and found to comply with the limits for a Class B digital device, pursuant to Part 15 of the FCC Rules. These limits are designed to provide reasonable protection against harmful interference in residential installation. This equipment generates, uses, and can radiate radio frequency energy, and if it is not installed and used in accordance with the instruction manual, it may cause harmful interference to radio communications. However, there is no guarantee that interference will not occur in a particular installation.

If this equipment does cause harmful interference to radio or television reception, which can be determined by turning the equipment off and on, the user is encouraged to try to correct the

interference by one or more of the following measures:
 Reorient or relocate the receiving antenna.
 Increase the separation between the equipment and receiver.
 Connect the equipment into an outlet on a circuit different from that to which the receiver is connected.
 Consult the dealer or an experienced radio/TV technician for help.

WARNING: Any changes or modifications to this unit not expressly approved by the party responsible for compliance could void the user's authority to operate the equipment

This equipment complies with FCC radiation exposure limits set forth for an uncontrolled environment. This equipment should be installed and operated with minimum distance 53 cm between the radiator and your body. This transmitter must not be co-located or operating in conjunction with any other antenna or transmitter.

This device meets all the other requirements specified in Part 15E of the FCC Rules.

FCC regulations restrict the operation of this device to indoor use only.

The operation of this device is prohibited to operate on oil platforms, cars, trains, boats, and aircraft, except that it is permitted to operate in the 5.925-6.425 GHz bands in large aircraft while flying above 10,000 feet.

Operation of transmitters in the 5.925-7.125 GHz band is prohibited for control of or communications with unmanned aircraft systems.

Innovation, Science and Economic Development (ISED) – Canada

This Class B digital apparatus complies with Canadian ICES-003.

Cet appareil numérique de la classe B est conforme à la norme NMB-003 du Canada.

This device contains licence-exempt transmitter(s)/receiver(s) that comply with Innovation, Science and Economic Development Canada's licence-exempt RSS(s). Operation is subject to the following two conditions:
 1. This device may not cause interference.
 2. This device must accept any interference, including interference that may cause undesired operation of the device.

L'émetteur/récepteur exempt de licence contenu dans le présent appareil est conforme aux CNR d'Innovation, Sciences et Développement économique Canada applicables aux appareils radio exempts de licence. L'exploitation est soumise aux deux conditions suivantes:
 1. L'appareil ne doit pas produire de brouillage;
 2. L'appareil doit accepter tout brouillage radioélectrique subi, même si le brouillage est susceptible d'en compromettre le fonctionnement.

For products available in the USA/Canada market, only channel 1~11 can be operated. Selection of other channels is not possible.

Pour les produits disponibles sur le marché des États-Unis/Canada, seuls les canaux 1 à 11 peuvent être utilisés. La sélection d'autres canaux n'est pas possible.

This equipment complies with ISED radiation exposure limits set forth for an uncontrolled environment. This equipment should be installed and operated with minimum distance 32cm between the radiator & your body.

Cet équipement est conforme aux limites d'exposition aux rayonnements ISED établies pour un environnement non contrôlé. Cet équipement doit être installé et utilisé avec un minimum de 32cm de distance entre la source de rayonnement et votre corps.

This device and its antennas(s) must not be co-located or operating in conjunction with any other antenna or transmitter except in accordance with IC multi-transmitter product procedures.

Cet appareil et son (ses) antenne(s) ne doivent pas être installés ou utilisés conjointement avec une autre antenne ou un autre émetteur, sauf conformément aux procédures de produit multi-émetteurs de IIC.

Caution: The device for the band 5150-5250 MHz is only for indoor usage to reduce potential for harmful interference to co-channel mobile satellite systems.

Attention: L'appareil destiné à la bande 5150-5250 MHz est uniquement conçu pour un usage intérieur afin de réduire les risques d'interférences nuisibles avec les systèmes satellites mobiles utilisant la même fréquence.

Devices shall not be used for control of or communications with unmanned aircraft systems. Les appareils ne doivent pas être utilisés pour contrôler ou communiquer avec des systèmes d'aéronefs sans pilote.

Devices shall not be used on oil platforms. Les appareils ne doivent pas être utilisés sur les plates-formes pétrolières.

Devices shall not be used on aircraft, except for the low-power indoor access points, indoor subordinate devices, low-power client devices, and very low-power devices operating in the 5925-6425 MHz band, that may be used on large aircraft as defined in the Canadian Aviation Regulations, while flying above 3,048 metres (10,000 feet).

Les appareils ne doivent pas être utilisés sur les avions, à l'exception des points d'accès intérieure à faible puissance, des dispositifs subordonnés intérieurs, des dispositifs clients de faible puissance et des dispositifs de très faible puissance fonctionnant dans la bande 5925-6425 MHz, qui peut être utilisée sur de grands avions tel que défini dans la réglementation de l'aviation canadienne, tout en volant au-dessus de 3 048 mètres (10 000 pieds).

Devices shall not be used on automobiles.
Les appareils ne doivent pas être utilisés sur les automobiles.

Devices shall not be used on trains.
Les appareils ne doivent pas être utilisés dans les trains.

Devices shall not be used on maritime vessels.
Les appareils ne doivent pas être utilisés sur les navires maritimes.

Operation of 5925-7125 MHz shall be limited to indoor use only.
L'utilisation de la bande 5925-7125 MHz doit être limitée à un usage intérieur uniquement.

European Conformity (CE) - EU

This is a Class B product. In a domestic environment, this product may cause radio interference, in which case the user may be required to take adequate measures.



Simplified EU Declaration of Conformity

Hereby, Fortinet, declares that this product is in compliance with the essential requirements and other relevant provisions of Directive 2014/53/EU. The full text of the EU declaration of conformity is available at the following internet address:
<https://site.fortinet.com/ProductRegulatory/EU>

Български
Този продукт е в съответствие с Директива 2014/53/ЕС.

Česky
Tento produkt je v souladu se směrnici 2014/53/EU.

Dansk
Dette produkt er i overensstemmelse med direktiv 2014/53/EU.

Deutsch
Dieses Produkt entspricht der Richtlinie 2014/53/EU.

Eesti
See toode vastab direktiivile 2014/53/EU.

English
This product is in compliance with Directive 2014/53/EU.

Español
Este producto cumple con la Directiva 2014/53/EU.

Ελληνική
Το προϊόν αυτό συμμορφώνεται με την Οδηγία 2014/53/ΕΕ.

Français
Ce produit est conforme à la Directive 2014/53/UE.

Hrvatski
Ovaj proizvod je u skladu s Direktivom 2014/53/EU.

Italiano
Questo prodotto è conforme alla Direttiva 2014/53/UE.

Latviski
Šis produkts atbilst Direktīvai 2014/53/ES.

Lietuvių
Šis gaminys atitinka direktyvą 2014/53/ES.

Malta
Dan il-prodott huwa konformi mad-Direttiva 2014/53/UE.

Magyar
Ez a termék megfelel a 2014/53/EU irányelvnek.

Nederlands
Dit product is in overeenstemming met Richtlijn 2014/53/EU.

Norsk
Dette produktet er i samsvar med direktiv 2014/53/EU.

Polski
Ten produkt jest zgodny z dyrektywą 2014/53/EU.

Português
Este produto está em conformidade com a Diretiva 2014/53/UE.

Rumunski
Acest produs este în conformitate cu Directiva 2014/53/UE.

Slovensky
Tento produkt je v súlade so smernicou 2014/53/EU.

Slovensko
Ta izdelek je v skladu z Direktivo 2014/53/EU.

Suomi
Tämä tuote on direktiivin 2014/53/EU mukainen.

Svenska
Denna produkt överensstämmer med direktiv 2014/53/EU.

The device is restricted to indoor use only when operating in the 5150 to 5350MHz and 5945 to 6425MHz frequency range in the following countries:

	AT	BE	BG	HR	CY	CZ	DK
	EE	FI	FR	DE	EL	HU	IE
	IT	LV	LT	LU	MT	NL	PL
	PT	RO	SK	SI	ES	SE	

Compliance with 2014/53/EU Radio Equipment Directive (RED)

In accordance with Article 10.8(a) and 10.8(b) of the RED, the following table provides information on the frequency bands used and the maximum RF transmit power of the product for sale in the EU:

Frequency Range (MHz)	Max. Transmit Power (dBm)
Bluetooth: 2402-2480MHz	20
Zigbee: 2405-2480MHz	20
WLAN 2.4GHz: 2412-2472MHz	20
WLAN 5GHz: 5180-5320MHz	23
WLAN 5GHz: 5500-5700MHz	30
WLAN 5GHz: 5725-5875MHz	13.98
WLAN 6GHz: 5955-6415MHz	23

UK Conformity Assessed (UKCA) – United Kingdom

This equipment should be installed and operated with minimum distance of 20cm between the radiator and your body.

This product is in compliance with Statutory Instrument 1206 Radio Equipment Regulations 2017. The full Declaration of Conformity for this product is available in:
<https://site.fortinet.com/ProductRegulatory/UK>

The device is restricted to indoor use only when operating in the 5150 to 5350 MHz and 5945 to 6425MHz frequency range in the following countries:



The product transmits within the frequency ranges and less than or equal to the power listed below:
2402-2480MHz less than 20dBm
2405-2480MHz less than 20dBm
2412-2472MHz less than 20dBm
5180-5240MHz less than 23dBm
5260-5320MHz less than 23dBm *
5500-5700MHz less than 30dBm *
5725-5875MHz less than 13.98dBm
5955-6415MHz less than 23dBm

Note: * Only with DFS bands certification

Voluntary Control Council for Interference (VCCI) – Japan

この装置は、クラスB機器です。この装置は、住宅環境で使用することを目的としています。この装置がラジオやテレビジョン受信機に近接して使用されると、受信障害を引き起こすことがあります。
取扱説明書に従って正しい取り扱いをして下さい。
V C C I – B

Bureau of Standards Metrology and Inspection (BSMI) – Taiwan

限用物質含有情況表 (RoHS Table) 請到以下 網址下載:
<https://www.fortinet.com/bsmi>

請仔細閱讀以下說明
本設備勿置於潮濕處。
連接至電源前，請先檢查電壓。
當設備不用時，請將所有電源線拔除，避免電壓不穩而造成傷害。
勿將任何液體灑入設備中，避免線路短路。
基於安全理由，只有受到專業訓練的從業人員，才可以打開本設備。
請勿自行調整或修理已通電的設備，以確保您的安全。
如不小心受傷，請立刻找急救人員給予您適當的救護，千萬別因傷勢輕微而忽略自己的傷勢。

National Telecommunications Commission (NCC) – Taiwan

NCC警語
取得審驗證明之低功率射頻器材，非經核准，公司、商號或使用者均不得擅自變更頻率、加大功率或變更原設計之特性及功能。低功率射頻器材之使用不得影響飛航安全及干擾合法通信；經發現有干擾現象時，應立即停用，並改善至無干擾時方得繼續使用。前述合法通信，指依電信管理法規作業之無線電通信。低功率射頻器材須遵守合法通信或工業、科學及醫療用電波輻射性電機設備之干擾。

使用此產品時應避免影響附近雷達系統之操作。

英屬蓋亞群島商防特網股份有限公司台灣分公司
地址：台北市內湖區行愛路176號2樓
電話：(02) 27961666

Agência Nacional de Telecomunicações (ANATEL) – Brazil

Este produto não é apropriado para uso em ambientes domésticos, pois poderá causar interferências eletromagnéticas que obrigam o usuário a tomar medidas necessárias para minimizar estas interferências.

Este equipamento não tem direito à proteção contra interferência prejudicial e não pode causar interferência em sistemas devidamente autorizados. Para maiores informações, consulte o site da ANATEL www.gov.br/anatel.

Telecommunication Engineering Centre (TEC) – India

This product conforms to the **TEC59432407** Essential Requirements of TEC, Department of Telecommunications, Ministry of Communications, Govt of India, New Delhi-110001.



May 12, 2026

Copyright © 2026 Fortinet, Inc. All rights reserved. Fortinet®, FortiGate®, FortiCare® and FortiGuard®, and certain other marks are registered trademarks of Fortinet, Inc., and other Fortinet names herein may also be registered and/or common law trademarks of Fortinet. All other product or company names may be trademarks of their respective owners. Performance and other metrics contained herein were attained in internal lab tests under ideal conditions, and actual performance and other results may vary. Network variables, different network environments and other conditions may affect performance results. Nothing herein represents any binding commitment by Fortinet, and Fortinet disclaims all warranties, whether express or implied, except to the extent Fortinet enters a binding written contract, signed by Fortinet's SVP Legal and above, with a purchaser that expressly warrants that the identified product will perform according to certain expressly-identified performance metrics and, in such event, only the specific performance metrics expressly identified in such binding written contract shall be binding on Fortinet. For absolute clarity, any such warranty will be limited to performance in the same ideal conditions as in Fortinet's internal lab tests. Fortinet disclaims in full any covenants, representations, and guarantees pursuant hereto, whether express or implied. Fortinet reserves the right to change, modify, transfer, or otherwise revise this publication without notice, and the most current version of the publication shall be applicable.

For Product License Agreement / EULA and Warranty Terms, visit <https://www.fortinet.com/content/dam/fortinet/assets/legal/EULA.pdf>

FAP-231KD-QSG-20260512

